

CALU-Graphics (800x480 enabled)

System requirements :

- PC with Intel based graphic adapter
- Windows XP/2000/NT, Linux, WinCE5, WinCE6
- Display from CarTFT.com with 800x480 native resolution and support for 800x480@70Hz

Hint :

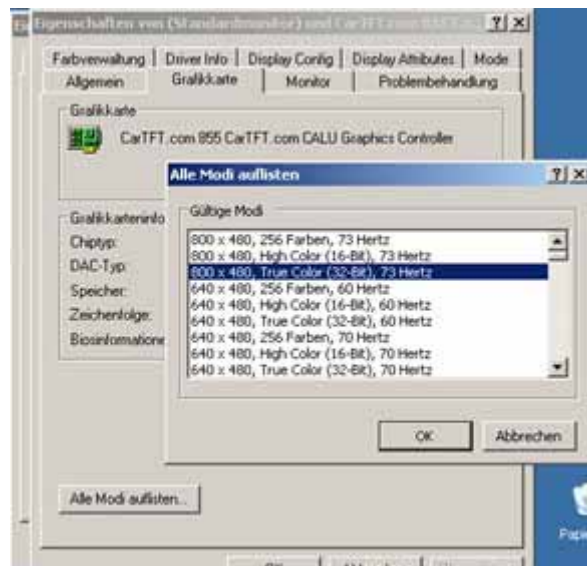
If available, then deinstall the existing graphics driver from system manager, software section (add/remove programs). Then reboot the PC. Windows will try to reinstall the old drivers. Just cancel every installation attempt.

Installation :

- 1.) Switch to „Utilities“-directory of the driver package and start „Setup.exe“ (or „SetupNT.exe“ with Windows NT).
- 2.) Choose „Installs driver and application files“.
- 3.) Confirm the software licence dialog with „I agree“.
- 4.) Confirm all messages, which point to non-Logo compliant drivers with „Continue installation“.
- 5.) After installation is done, the PC will reboot.
- 6.) The driver has been installed.

Enable 800x480-resolution :

Switch to display settings.



Then choose „Advanced“ and „graphics adapter“. Now click on “List all modes“.

The resolution „800x480, True Color (32-bit), 71Hertz“ is listed at the top of the list.

Version 4.0, 27.06.2009

Oliver Aigner

CarTFT.com